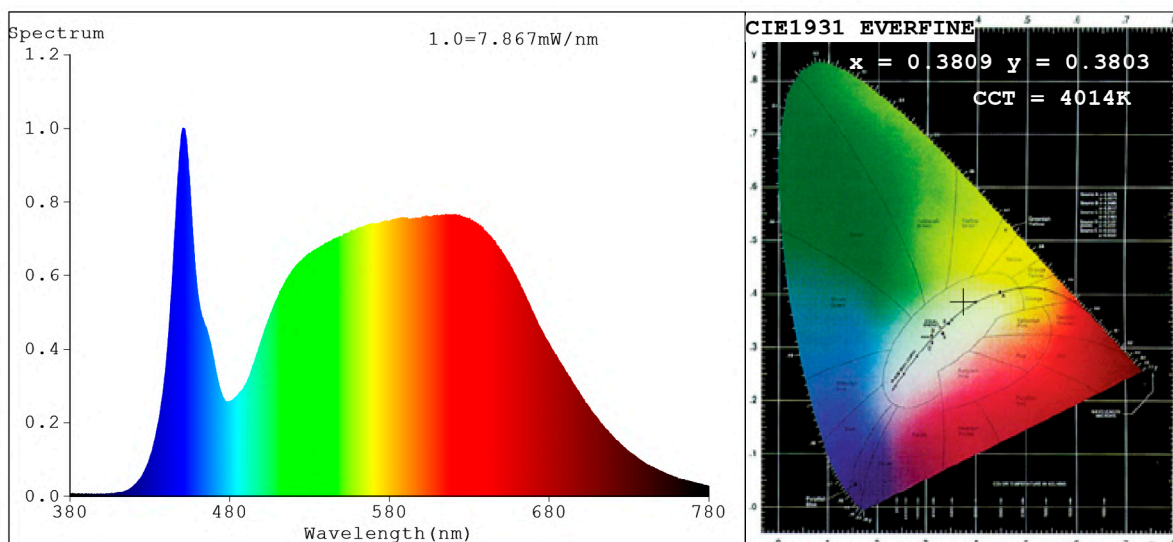


Spectrum Test Report



Color Parameters:

Chromaticity Coordinate: $x=0.3809$ $y=0.3803$ $u'=0.2240$ $v'=0.5032$
 CCT=4014K (Duv=0.0015) Dominant WL:Ld =578.2nm Purity=28.4%
 Ratio:R=19.2% G=77.2% B=3.7%; Peak WL:Lp=450.9nm FWHM=19.2nm
 Render Index:Ra=90.5 CRI=86.3 TM30:Rf=89 Rg=99 Lav=580.0nm
 R1 =90 R2 =92 R3 =92 R4 =91 R5 =89 R6 =88 R7 =95
 R8 =86 R9 =63 R10=80 R11=90 R12=65 R13=91 R14=95 R15=89

Photo Parameters:

Flux = 389.1 lm Eff. : 88.24 lm/W Fe = 1.324 W Scotopic:675.41 S/P:1.7359

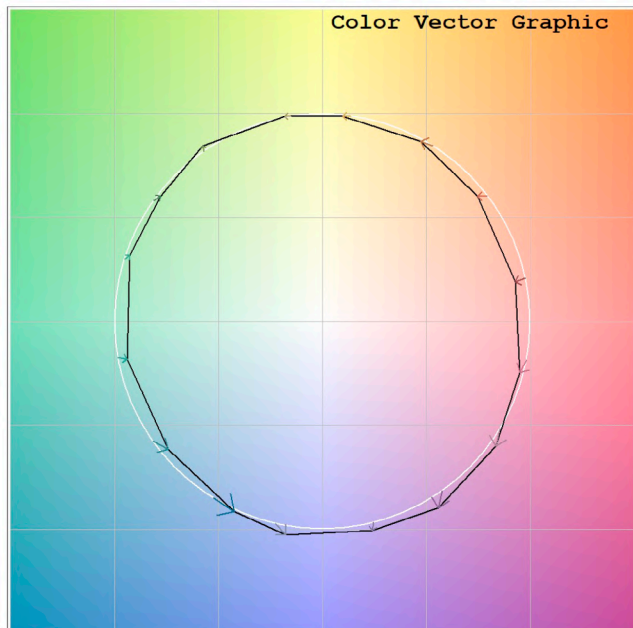
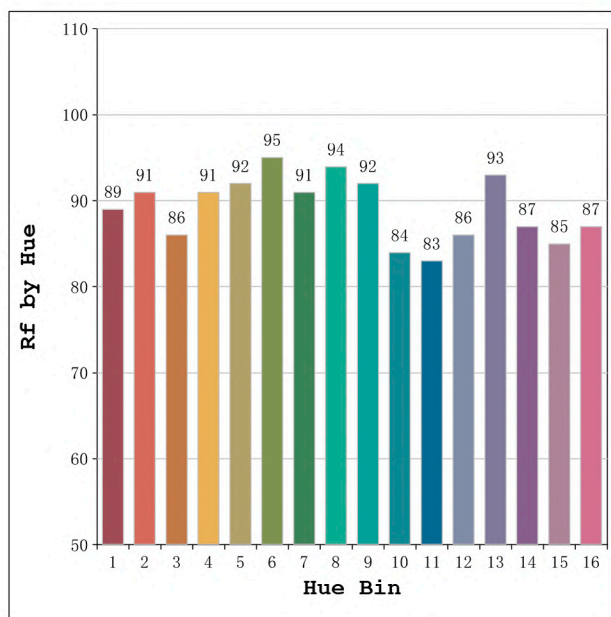
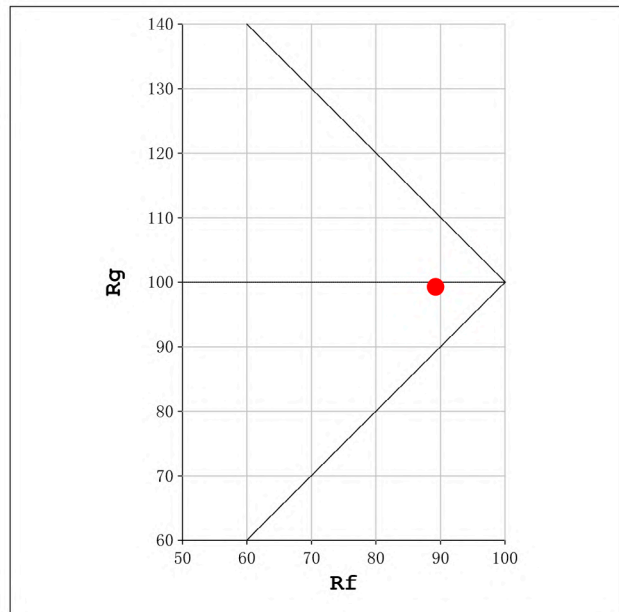
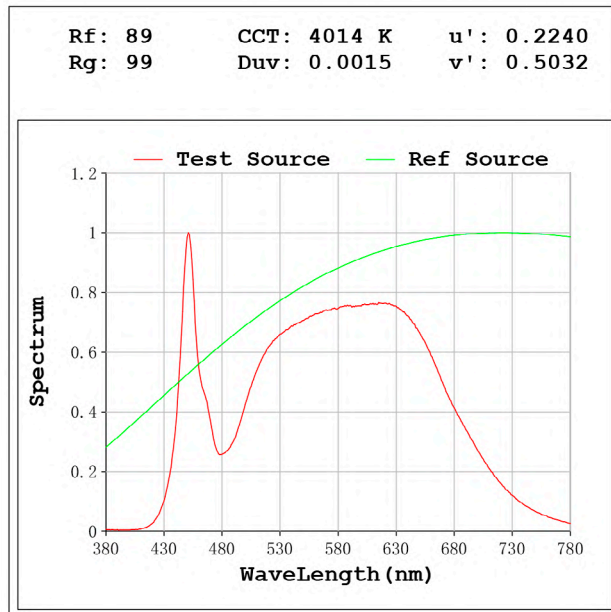
Electrical parameters:

V = 11.998 V I = 0.3675 A P = 4.409 W PF = 1.000

Status: Integral T = 4023 ms Ip = 52184 (80%)

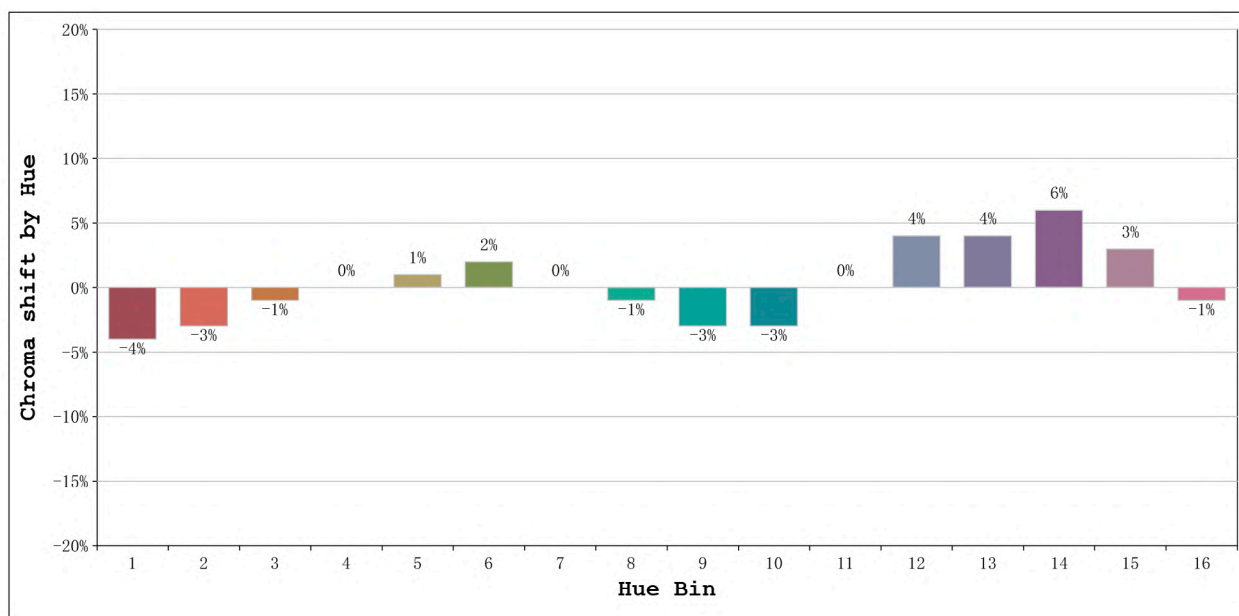
Model:Ecoled Ibiza pro 4000K
 Tester:Sergio Carneros
 Temperature:20Deg
 Manufacturer:Luz Negra.S.L

Number: 30.095
 Date:2022-02-02 08:42:11
 Humidity:50%
 Remarks:100cm Tira flexible



Model:Ecoled Ibiza pro 4000K
 Tester:Sergio Carneros
 Temperature:20Deg
 Manufacturer:Luz Negra.S.L

Number: 30.095
 Date:2022-02-02 08:42:11
 Humidity:50%
 Remarks:100cm Tira flexible



Hue Bin	Hue Angle	Rf	Graphic shift(%)	
			Chroma	Hue
1	0.0° - 22.5°	89	-4	0
2	22.5° - 45.0°	91	-3	2
3	45.0° - 67.5°	86	-1	6
4	67.5° - 90.0°	91	0	4
5	90.0° - 112.5°	92	1	3
6	112.5° - 135.0°	95	2	0
7	135.0° - 157.5°	91	0	-3
8	157.5° - 180.0°	94	-1	-1
9	180.0° - 202.5°	92	-3	2
10	202.5° - 225.0°	84	-3	7
11	225.0° - 247.5°	83	0	12
12	247.5° - 270.0°	86	4	6
13	270.0° - 292.5°	93	4	-1
14	292.5° - 315.0°	87	6	-5
15	315.0° - 337.5°	85	3	-7
16	337.5° - 360.0°	87	-1	-5

Model:Ecoled Ibiza pro 4000K
Tester:Sergio Carneros
Temperature:20Deg
Manufacturer:Luz Negra.S.L

Number: 30.095
Date:2022-02-02 08:42:11
Humidity:50%
Remarks:100cm Tira flexible